

# Voting Instructions

Maryland's voting system features enhance voter accessibility.

Please ask the election judge about your voting options:



- Audio Ballot with headphones and keypad
- Adjustable Screen for seated voting
- Large Text
- High Contrast



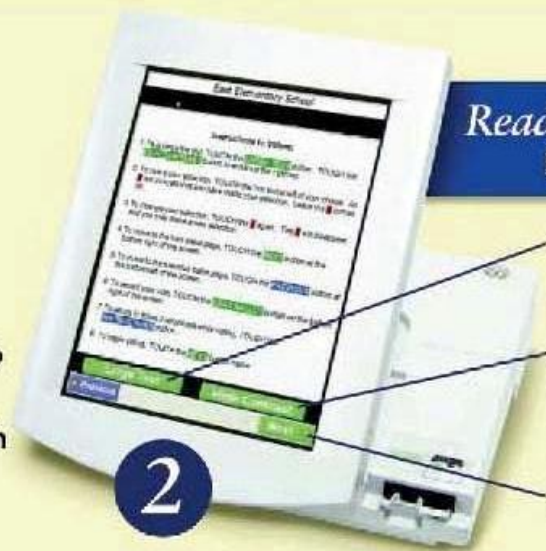
## Start: Insert Card



1

Insert voter access card into slot at right of screen.  
Card should be face up with the arrow first.  
Push card firmly until you hear a click.

## Read "Instructions to Voters"



2

Touch "LargeText" to increase text size.  
Touch "High Contrast" to view a black and white ballot.  
Touch "Next" to access ballot.

## Select Candidates or Questions



3

Touch the box next to the candidate or question of your choice.

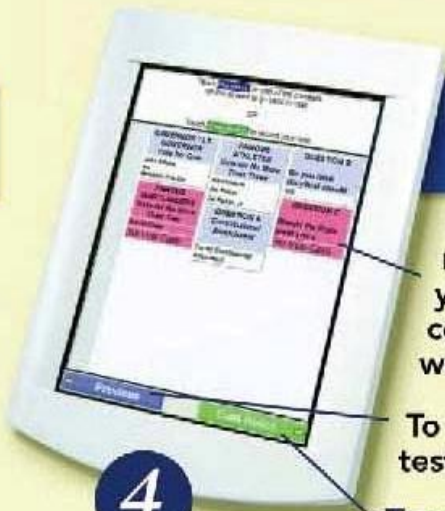
To change or cancel your selection, touch the box again.

Touch "Next" to advance the ballot page.

Touch "Instructions" to go back to the instructions page.

Touch "Previous" to go to previous screen.

## Review & Cast Ballot



4

On "Summary Page," review your choices. If you do not fully vote a contest, "No Vote Cast" will appear in red.

To go back, Touch a contest or Touch "Previous."

Touch "Cast Ballot" when ready to record your vote.

*Once your ballot is "cast," you may not vote again.*

## Finish: Remove Card



5

Remove the voter access card and return it to the election judge.

